



# KANE COUNTY

WOJNICKI, Weber, Allan, Barreiro, Davoust, Kious, Sanchez

## ENERGY AND ENVIRONMENTAL COMMITTEE

WEDNESDAY, DECEMBER 12, 2018

---

County Board Room

Agenda

9:00 AM

Kane County Government Center, 719 S. Batavia Ave., Bldg. A, Geneva, IL 60134

---

1. **Call to Order**
2. **Approval of Minutes: November 14, 2018**
3. **Environmental (J. Wollnik)**
4. **Recycling/Solid Waste (J. Jarland)**
5. **Sustainability (J. Mino)**
  - A. Presentation: Idling Reduction for Kane County Schools (attached)
  - B. Presentation: Public Sector New Construction Program (Hanh Pham, Project Manager, ComEd Energy Efficiency Program) (attached)
6. **New Business**
7. **Public Comment**
8. **Reports Placed on File**
9. **Executive Session (If Needed)**
10. **Adjournment**

# Idling Reduction

Connecting Kane County's Idling Reduction Policy  
with Local Schools



Presented by: Jessica Mino

December 12, 2018

# Kane County's Idling Reduction Policy



## Idling Reduction Policy for Kane County Government Vehicles, Staff and Contractors

### SEC. 1. FINDINGS AND PURPOSE

Kane County finds that:

1. In the Kane County Vision Statement, the County commits to "Being good stewards of the natural and economic resources that make up our unique urban and rural communities" and "Promoting an environment that advocates health, welfare and safety."
2. The Kane County Operational Sustainability Plan was adopted on February 13, 2013 [Resolution #13-24] and includes an action item of creating a vehicle idle policy that will apply to vehicles on Kane County government properties and Kane County government vehicles driven to other locations.
3. Kane County endorsed the Sierra Club Cool Counties Program on July 9, 2013 [Resolution #13-213], recommending that the County reduce greenhouse gas emissions to 10% below 2007 levels by 2020 and 20% below 2007 levels by 2030.
4. Air pollution is a health concern in Kane County, as it is in many metropolitan areas of the United States. These air pollution problems are caused in large part by emission from automobiles and trucks. Air pollution can cause or aggravate lung illnesses such as acute respiratory infections, asthma, chronic bronchitis, emphysema, and lung cancer.<sup>1</sup>
5. Exhaust from vehicles (both on- and off-road) and combustion engine-powered equipment is a substantial source of carbon monoxide, and toxic air contaminants.<sup>1</sup>
6. A study of idling exhaust emissions conducted by the U.S. Environmental Protection Agency indicates that trucks operating on diesel fuel emit 144 grams per hour of nitrogen oxide and 8224 grams per hour of carbon dioxide emissions and consume 0.82 gallons of fuel per hour while idling.<sup>2</sup>
7. Turning off and starting an engine will use less fuel than letting the engine run for thirty seconds.<sup>3</sup>
8. Modern vehicles do not need to be warmed up before driving. The best way to warm up a vehicle is by driving it.<sup>4</sup>
9. Engine wear is greater at prolonged idle than during normal operation.<sup>5</sup>
10. Kane County can play an important role in improving air quality and reducing the consumption of petroleum products by limiting the amount of time vehicle engines and combustion-powered equipment are allowed to idle within its jurisdiction.



# Signage



# Connecting with Schools

- ❑ Install signs where parents/guardians wait to pick up students
- ❑ Improve environment for children
- ❑ Protect staff monitoring school release



# Connecting with Schools

Currently reaching out to:

- Kane County Regional Office of Education (ROE)
- Non-for-profit organizations Kane County partners with for environmental education
- Any other means?



Questions?



# Public Sector New Construction

December 12, 2018

Presented by: Hanh Pham



# ComEd Energy Efficiency Program Public Sector New Construction

INTRODUCTION

OFFERING  
BASICS

TECHNICAL  
ASSISTANCE

ELIGIBILITY

WRAP UP

# Public Sector Under FEJA

Under the Future Energy Jobs Act (FEJA), the utilities are charged with taking on the delivery of energy efficiency offerings for these types of public sector facilities:

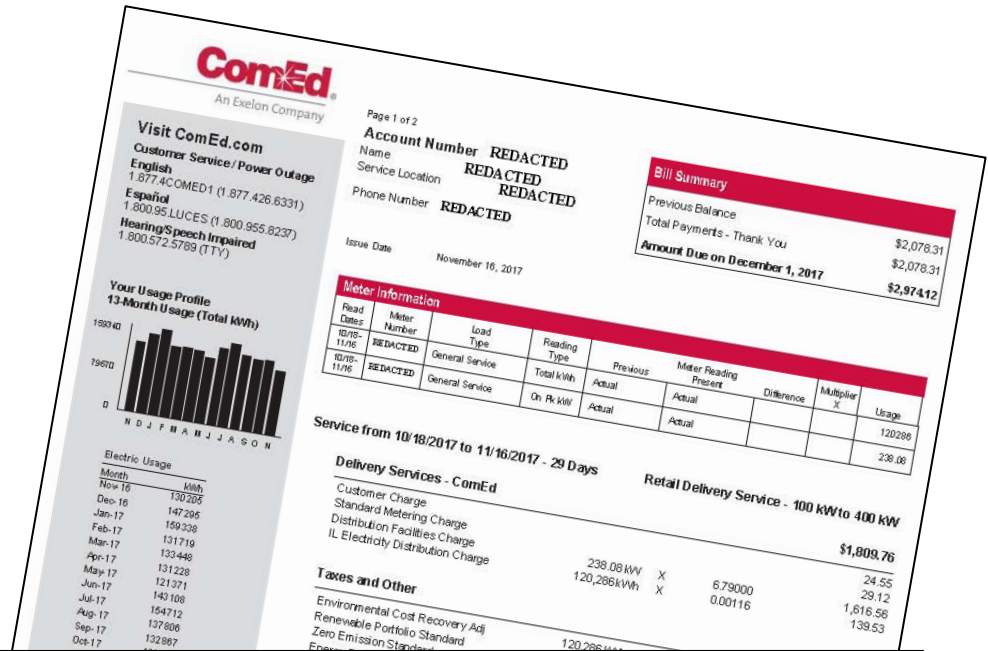
- Units of local government (park districts, libraries, etc.)
- Municipal corporations
- School districts
- Community college districts
- Public housing\*

Other public sector facilities may also qualify, though different incentive structures will apply.

\* Public housing new construction or major renovations may be eligible for higher incentives through the [affordable housing new construction](#) offering. For more information view our [on-demand webinar](#).

# This Program is Funded by You!

- ✓ Charge on the monthly bill for all ComEd and gas utility customers
- ✓ Based on kWh and therm usage



<b>Taxes and Other</b>				<b>\$1,164.36</b>
Environmental Cost Recovery Adj	120,286 kWh	X	0.00005	6.01
Renewable Portfolio Standard	120,286 kWh	X	0.00094	113.07
Zero Emission Standard	120,286 kWh	X	0.00195	234.56
Energy Efficiency Programs	120,286 kWh	X	0.00046	55.33
Franchise Cost	\$1,804.46	X	1.41500%	25.53
State Tax				371.47
Municipal Tax				469.05

# Public Sector: Ways to Save

## Standard and Custom Incentives

- ✓ Lighting
- ✓ HVAC
- ✓ Kitchen equipment
- ✓ Energy management systems
- ✓ Variable speed drives
- ✓ Municipal street lights
- ✓ **New construction**



[ComEd.com/PublicSectorEE](http://ComEd.com/PublicSectorEE)

# Public Sector: Ways to Save

## Tune-Ups and Technical Services

- ✓ Facility and system assessments
- ✓ Retro-commissioning
- ✓ Strategic energy management
- ✓ Energy advisor
- ✓ **New construction**

**ComEd Energy Efficiency Program**

**DESIGNED FOR ORGANIZATIONS LIKE YOURS**

Are your park district facilities taking advantage of the savings?

The ComEd Energy Efficiency Program offers a variety of programs and tools to help you save energy. Whether your public facility is small, we can help you find the right program for you. Take advantage of our FREE energy audits and products installed for FREE. New programs are coming soon.

**FIND IDEAS NOW**  
VISIT [ComEd.com/PEE](http://ComEd.com/PEE)  
EMAIL [PublicSectorEE@ComEd.com](mailto:PublicSectorEE@ComEd.com)  
CALL 855-433-2700

**INCENTIVES OVERVIEW**

Ask for details about these energy efficiency programs!

**STANDARD & CUSTOM INCENTIVES**  
Incentives available for improvements to indoor and outdoor lighting, energy management systems, refrigeration, compressed air systems, laboratories, wastewater treatment plants, HVAC systems, and more.

**FREE! FACILITY ASSESSMENTS**  
A qualified ComEd energy engineer will visit your facility for a FREE, in-depth assessment to identify energy-saving opportunities. You'll receive a detailed report including estimated energy and cost savings, project costs, potential incentives and available for specific systems, such as data systems and combined heat and power.

**NEW CONSTRUCTION**  
Building developers and design teams benefit from technical assistance and financial incentives to exceed standard energy code requirements.

**IMPROVED! RETRO-COMMISSIONING (RCX)**  
Energy experts conduct a fully-funded system performance study of your facility to identify no- and low-cost opportunities for operational improvements.

**RECEIVE PAYMENTS FASTER!**  
On average, ComEd processes customer reimbursement checks 6 weeks of project completion.

**NEW! INSTANT LIGHTING DISCOUNTS**  
Purchase energy-efficient lighting at reduced prices from participating distributors. No incentive paperwork necessary!

**NEW! STRATEGIC ENERGY MANAGEMENT (SEM)**  
This innovative offer helps identify energy efficiency improvements through building engineer training and diagnostics.

**HVAC TUNE-UP**  
Our RoofTop Unit Optimization offers a comprehensive tune-up of your HVAC-packaged or split system, and includes programmable thermostat modification, replacement or repair.

**SMALL FACILITY ENERGY SAVINGS PROGRAM**  
Offered jointly with Henry Gas, Peoples Gas and North Shore Gas, this offering provides free energy assessments, free product installs, and incentives for energy efficiency equipment in qualifying public sector facilities.

**DATA CENTERS**  
Improve the energy efficiency of your data center, get technical assistance, and receive incentives for upgrades to your facility.

**GET STARTED TODAY!**  
VISIT [ComEd.com/PublicSectorEE](http://ComEd.com/PublicSectorEE)  
EMAIL [PublicSectorEE@ComEd.com](mailto:PublicSectorEE@ComEd.com)  
CALL 855-433-2700

**ComEd** An Exelon Company

**ComEd** An Exelon Company **powering lives**

**PUBLIC SECTOR**



# Public Sector New Construction: What We Do

- ✓ Delivering high-quality education and training
- ✓ Providing expert technical assistance
- ✓ Offer financial incentives for implementation of electric and gas energy conservation measures that exceed current Illinois Energy Conservation Code requirements



*Coordinated program between ComEd, Nicor Gas, Peoples Gas and North Shore Gas*

# Benefits for Design Firms

- ✓ Access to nationally recognized energy efficiency expertise
- ✓ Community recognition for sustainable design
- ✓ Potential incentive for your clients
- ✓ Potential incentive for the lead design firm:

**Up to 10 percent of owner's incentive (additional) for firms **fully engaged** with the technical assistance team**



*Photo courtesy Cannon Design and Christopher Barrett Photography*

# ComEd Energy Efficiency Program Public Sector New Construction

INTRODUCTION

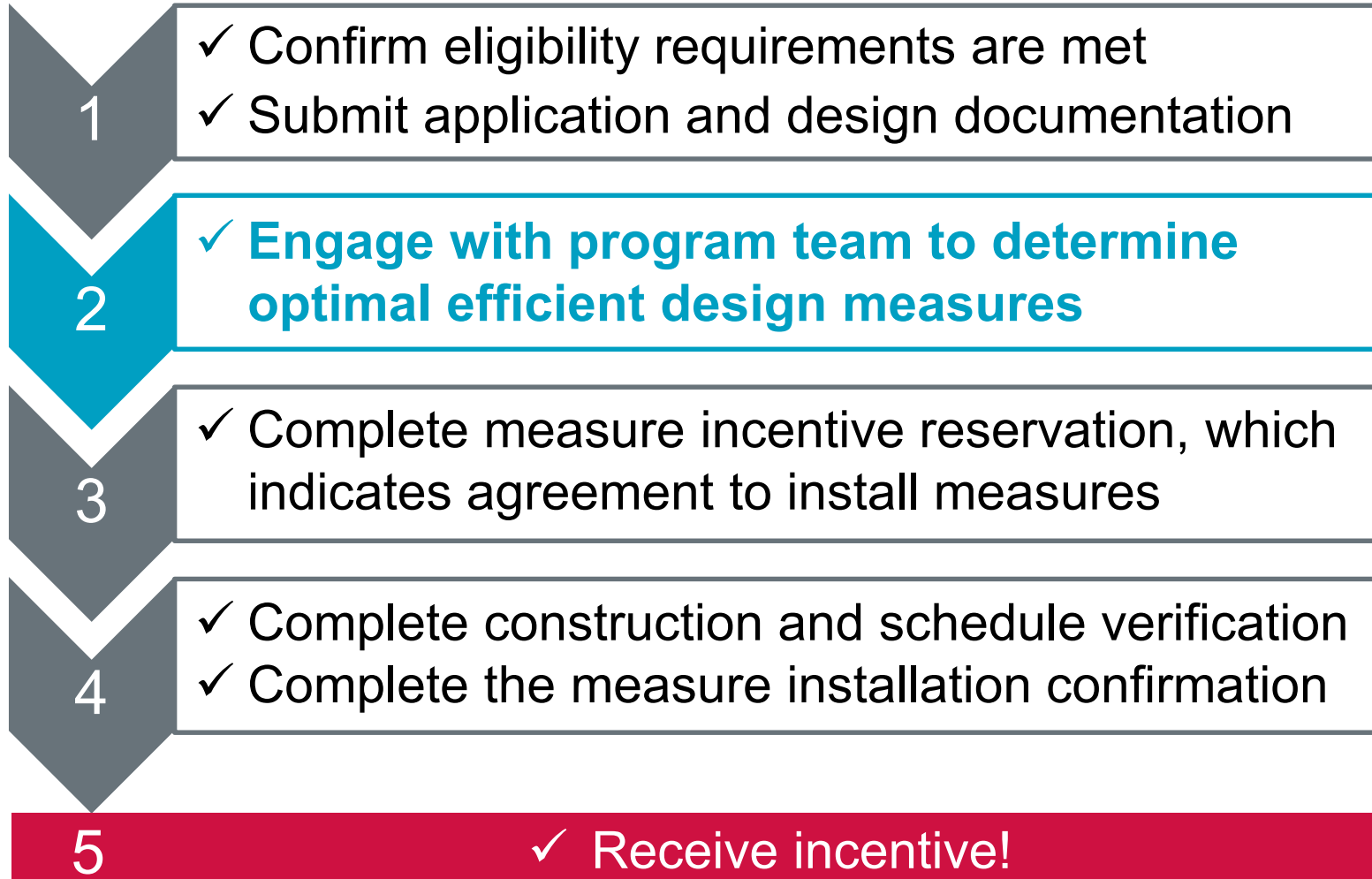
OFFERING  
BASICS

TECHNICAL  
ASSISTANCE

ELIGIBILITY

WRAP UP

# New Construction Timeline



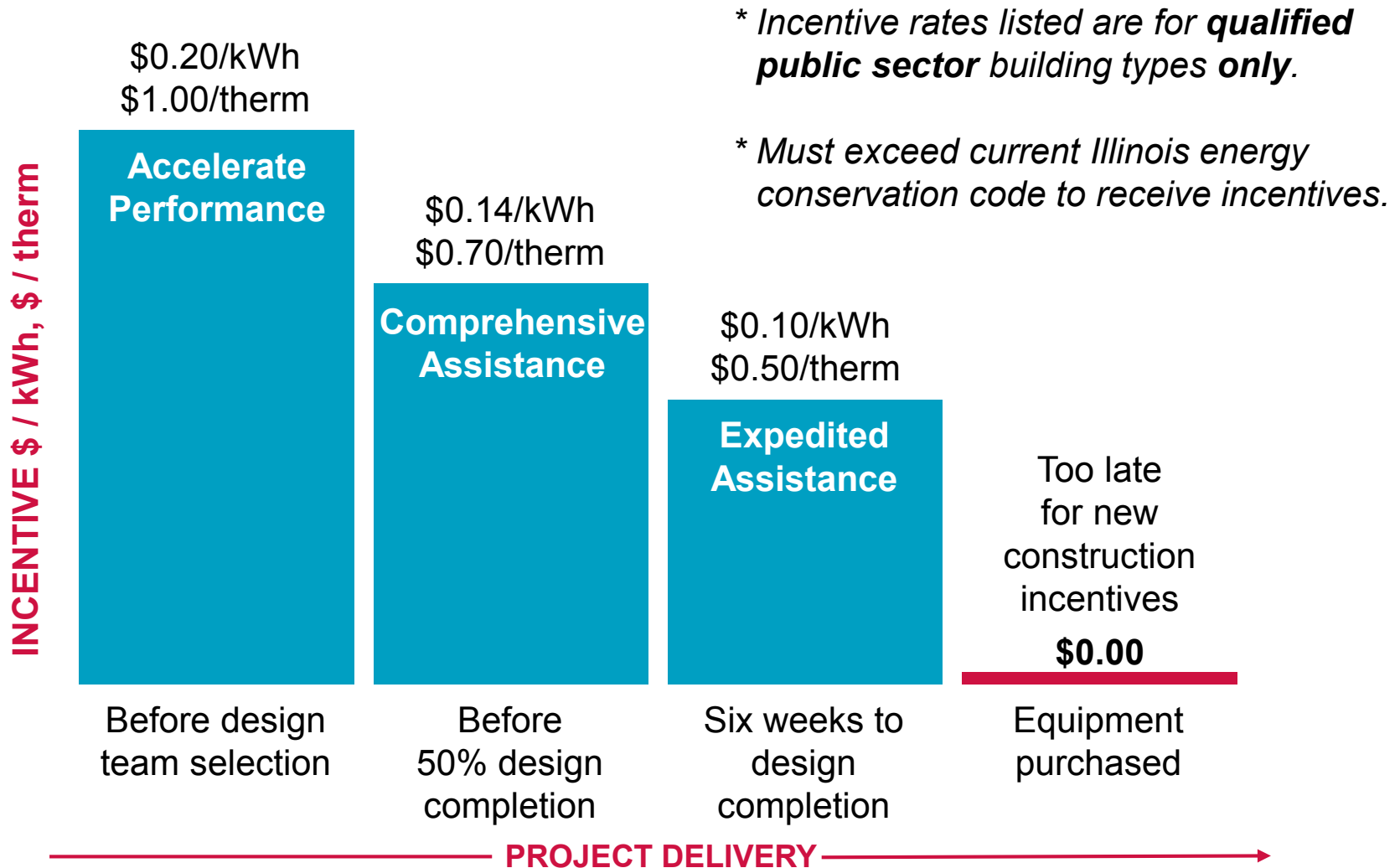
# Incentives

The following types of buildings are qualified for an increased incentive rate:

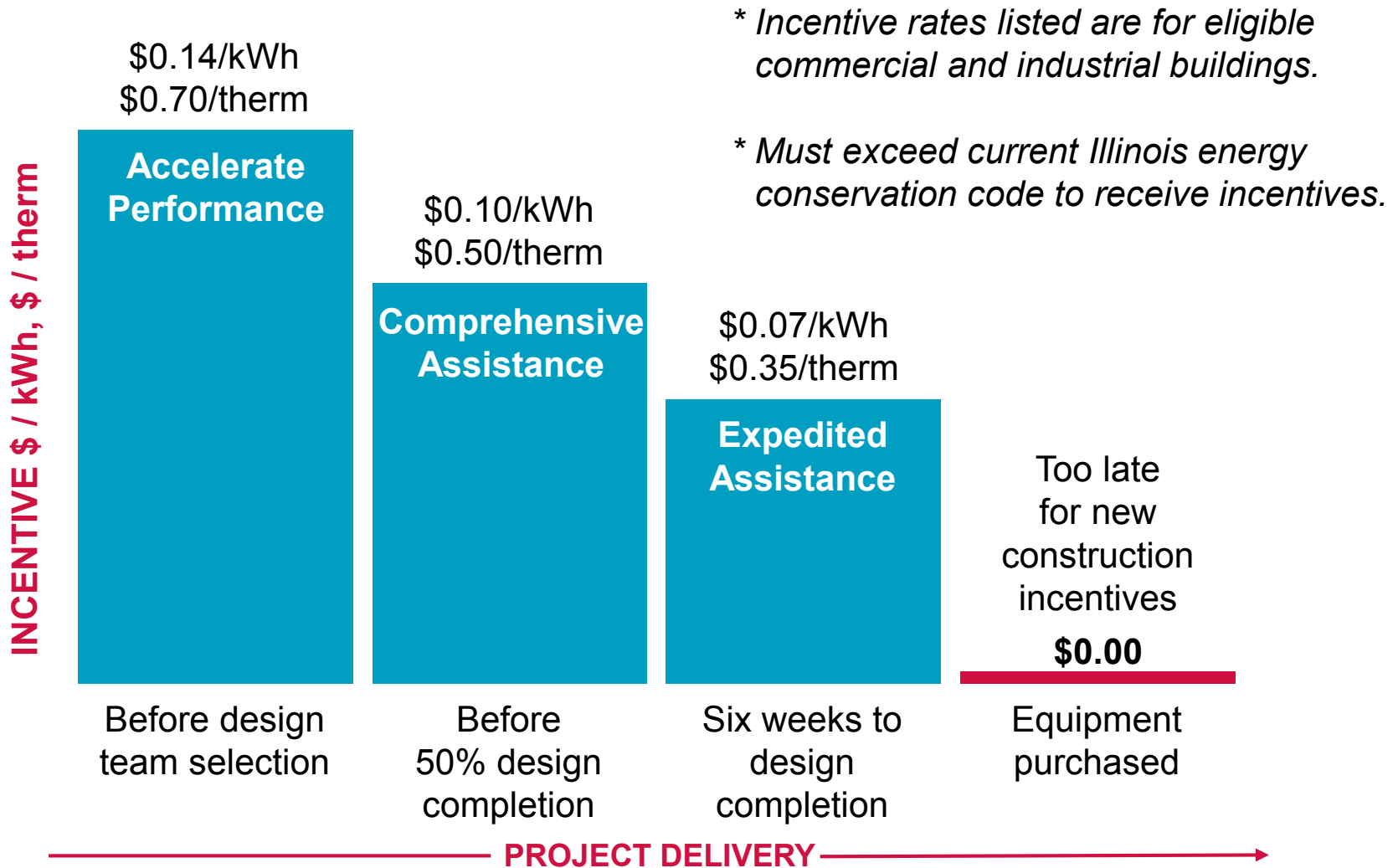
- Units of local government (park districts, libraries, etc.)
- Municipal corporations
- Public school districts
- Community college districts
- Public housing authorities



# Qualified Public Sector Incentive Rates



# Commercial and Industrial Incentive Rates



# Accelerate Performance for Qualified Public Sector

## Performance-Based Procurement

For building owners and developers:

- ✓ Provide project technical support in programming phase
- ✓ Assist with requests for proposal (RFPs) and contract language to establish energy performance requirements
- ✓ Identify appropriate energy use intensity (EUI) targets
- ✓ Increase energy efficiency incentives
- ✓ Up to **\$0.20/kWh and \$1.00/therm** for projects **engaging before** hiring design team and implementing energy requirements



# Comprehensive Assistance for Qualified Public Sector

## Analysis Tailored to Your Project

- ✓ Up to **\$0.14/kWh and \$0.70/therm** for projects **engaging between** concept planning and 50 percent design completion
- ✓ Identify optimal energy efficiency strategies
- ✓ Detailed whole-building energy analysis



# Expedited Assistance for Qualified Public Sector

## Further Along but Seeking Technical Assistance? We Can Still Help!

- ✓ Up to **\$0.10/kWh and \$0.50/therm** for projects **engaging after** 50 percent design completion with at least six weeks to design completion
- ✓ Suggest building energy efficiency opportunities
- ✓ Expedited building energy analysis





# ComEd Energy Efficiency Program Public Sector New Construction

INTRODUCTION

OFFERING  
BASICS

TECHNICAL  
ASSISTANCE

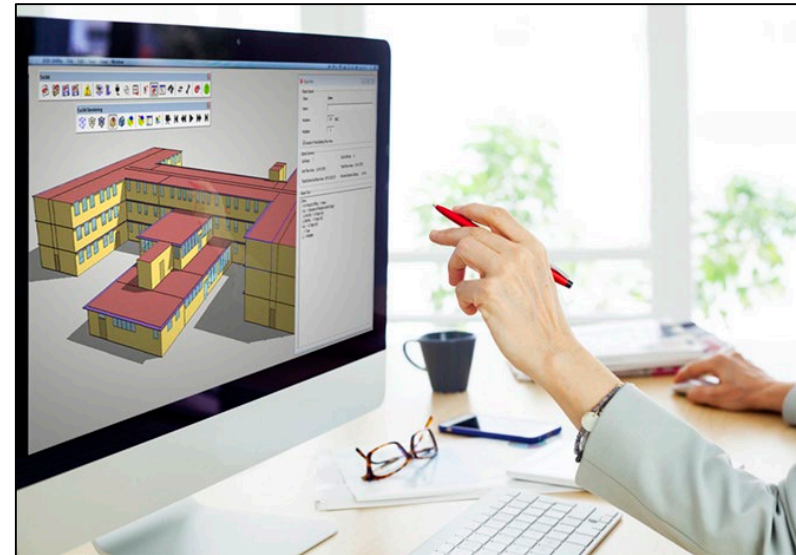
ELIGIBILITY

WRAP UP

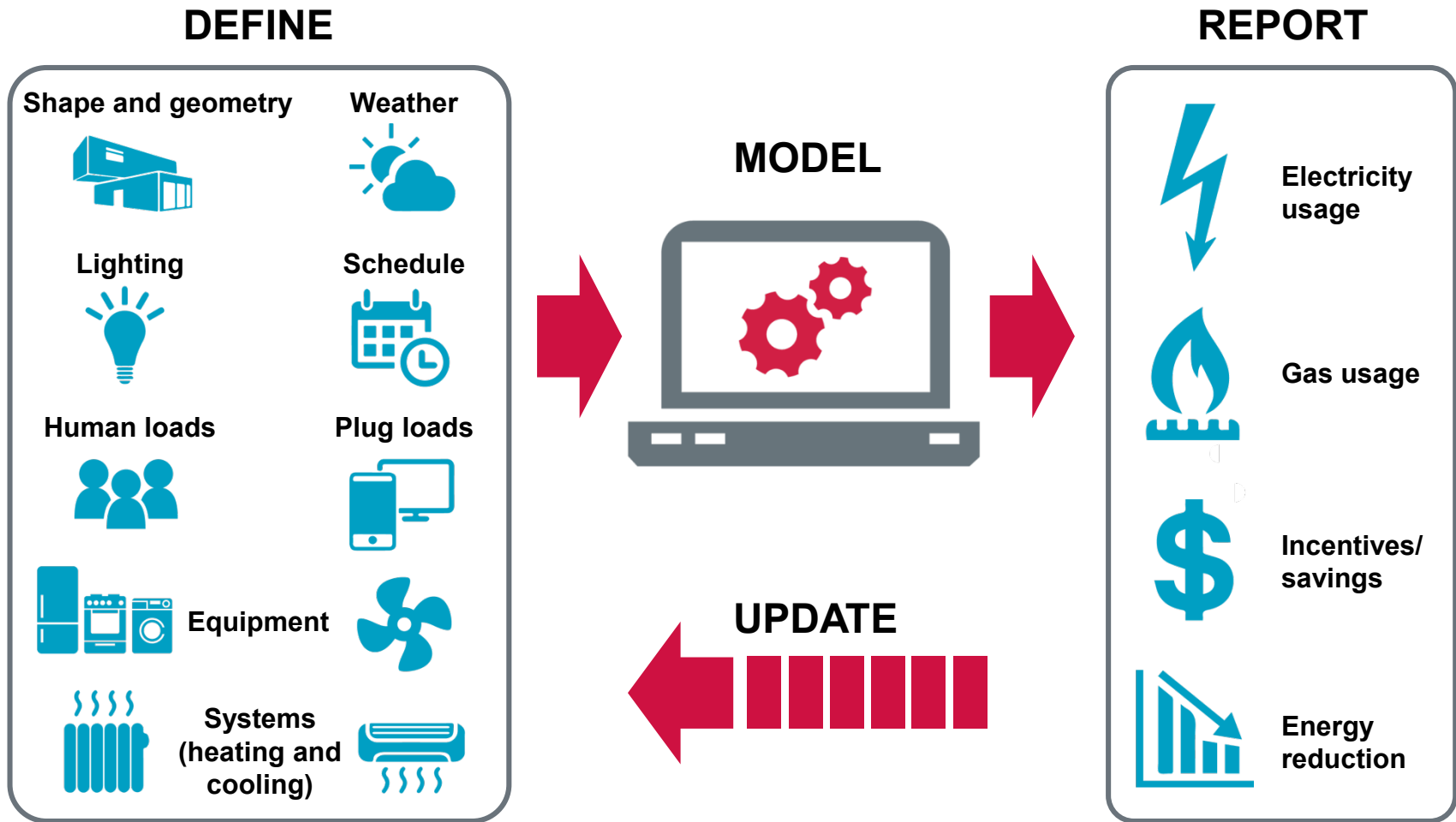
# Technical Assistance Overview

## Our Team Will...

- ✓ Meet with building owners and design teams to set goals and strategies for energy efficiency
- ✓ Conduct design review and provide feedback on energy efficiency solutions
- ✓ Evaluate design options and suggest areas for optimizing energy efficiency
- ✓ Conduct holistic energy modeling (eQUEST, Trane TRACE, OpenStudio, NEO)
- ✓ Determine best energy value among different design alternatives



# Energy Analysis—Process



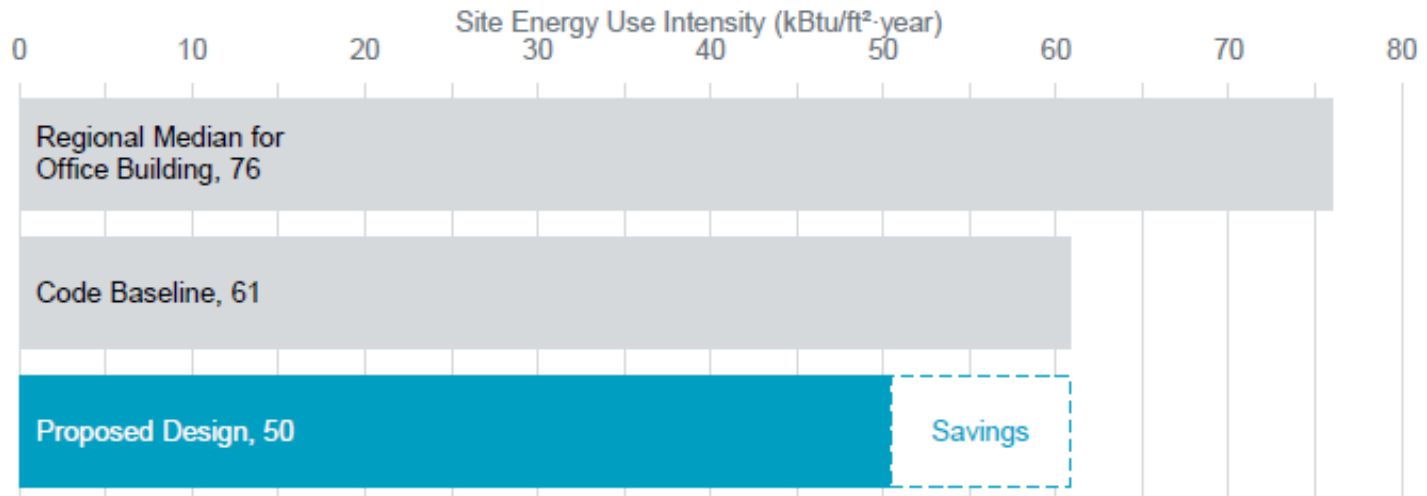
# Modeling Results Example



## PERFORMANCE SUMMARY

\$52,259	Electric Incentive	17%	Electricity Savings
\$331	Gas Incentive	10%	Natural Gas Savings
\$5,259	Design Incentive	17%	Energy Cost Savings

## BENCHMARKING



# Incentive Calculation Example

Based on modeled annual energy usage (one year)

Code building	1,076,168 kWh	95,132 therms
– Your building	785,090 kWh	72,747 therms
<b>Energy savings 291,078 kWh and 22,385 therms</b>		

(291,078 kWh saved x incentive rate)
+ (22,385 therms saved x incentive rate)
<b>\$ Owner incentive</b>

**\$ Owner incentive x 10% = \$ Design team incentive**



# ComEd Energy Efficiency Program Public Sector New Construction

INTRODUCTION

OFFERING  
BASICS

TECHNICAL  
ASSISTANCE

ELIGIBILITY

WRAP UP



# Public Sector New Construction Eligibility

## We Can Support Building Design Projects That Are:

- ✓ In ComEd service territory
- ✓ New construction or major renovation
- ✓ Minimum 5,000 square feet
- ✓ Exceed current Illinois Energy Conservation Code requirements
- ✓ **Early in design**
- ✓ And...



# Public Sector New Construction Eligibility

## We Can Support Building Design Projects That:

- ✓ Implement significant beyond-code energy conservation measures (ECMs) for **at least two** of these primary building systems:
  - Envelope
  - Primary HVAC equipment
  - Lighting
  - Qualified refrigeration\*

Did we mention **early in design**?

*\*Typically applies to refrigerated warehouses and grocery stores*



# ComEd Energy Efficiency Program Public Sector New Construction

INTRODUCTION

OFFERING  
BASICS

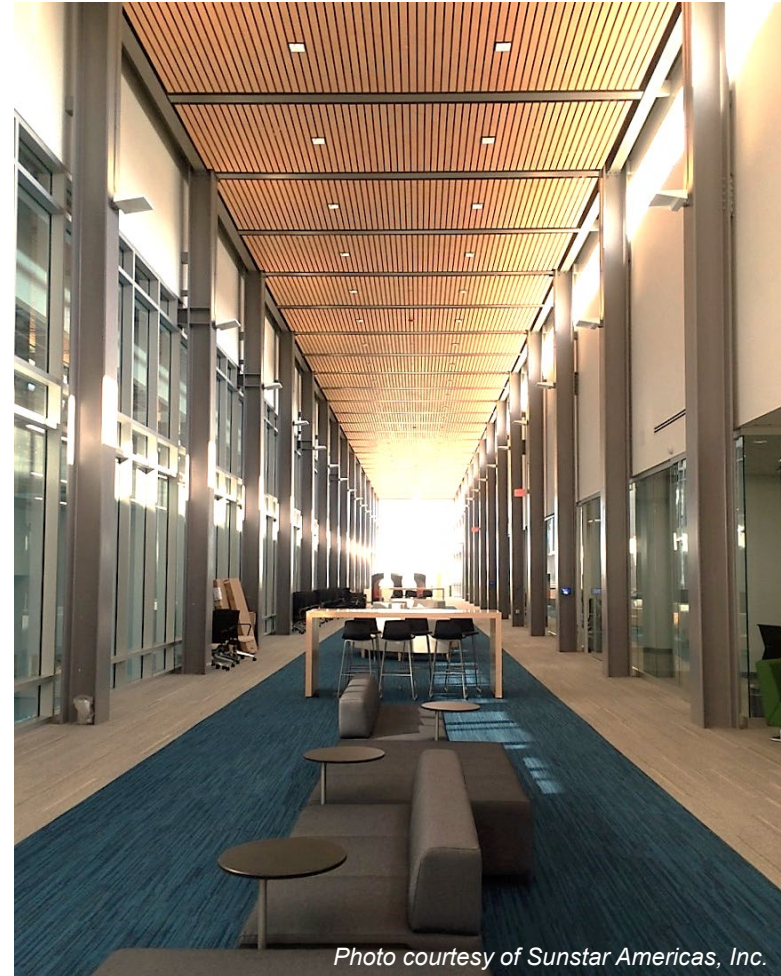
TECHNICAL  
ASSISTANCE

ELIGIBILITY

WRAP UP

# Key Items to Remember

- ✓ Bring your projects to our team **early in design**
- ✓ Stay engaged with our technical team throughout the design process
- ✓ Implement significant beyond-code energy conservation measures (ECMs) for **at least two** primary building systems



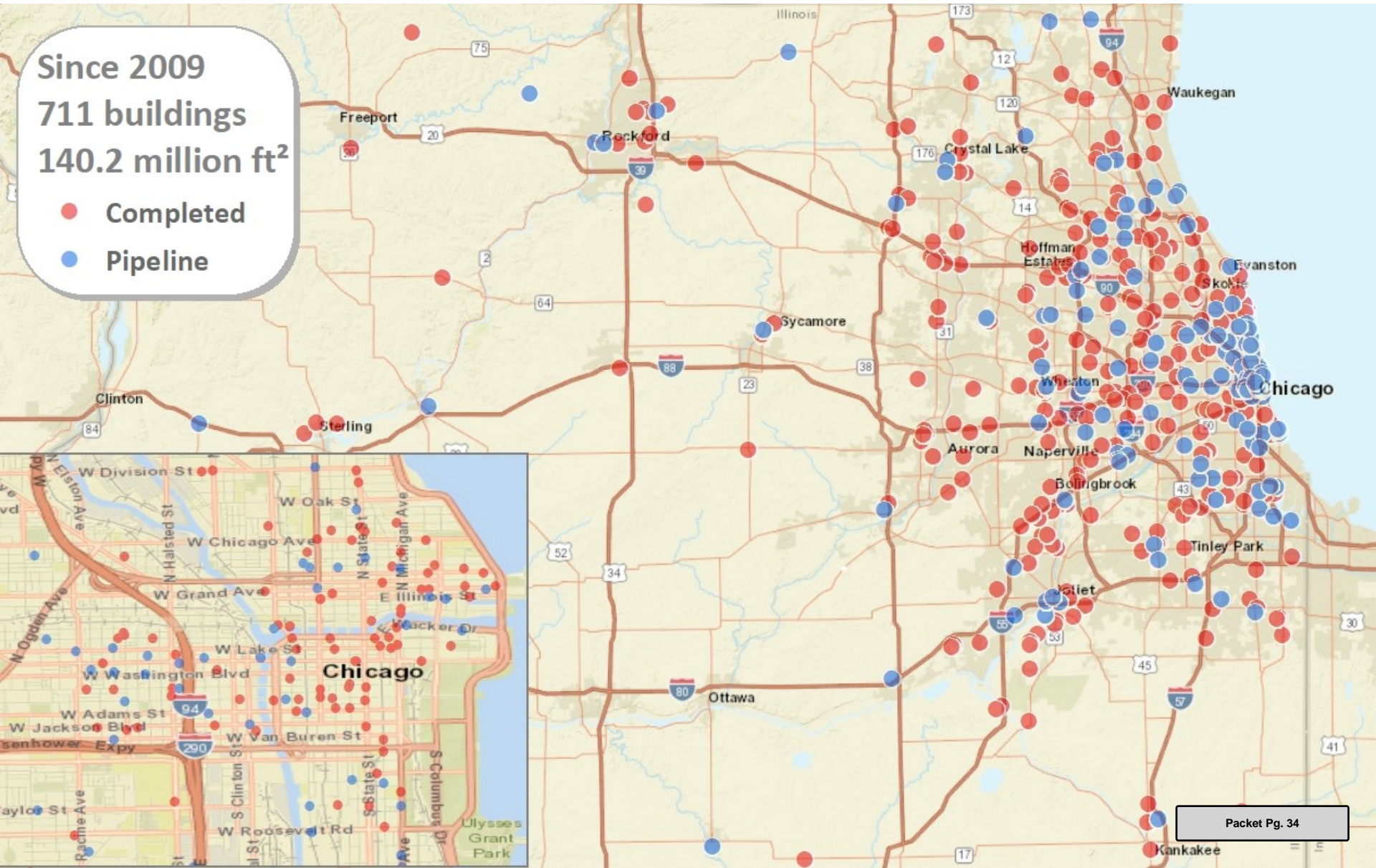
*Photo courtesy of Sunstar Americas, Inc.*



# Experienced Team

Since 2009  
711 buildings  
140.2 million ft<sup>2</sup>

- Completed
- Pipeline



# Thank you! Program Information

- ✓ **ComEd Incentives**  
[ComEd.com/BizIncentives](https://ComEd.com/BizIncentives)
- ✓ **ComEd New Construction**  
[ComEd.com/NewConstruction](https://ComEd.com/NewConstruction)
- ✓ **ComEd Public Sector**  
[ComEd.com/PublicSectorEE](https://ComEd.com/PublicSectorEE)
- ✓ **On-Demand PS Webinar**  
[seventhwave.org/ComEdTraining](https://seventhwave.org/ComEdTraining)



Facility Assessments

ComEd can help your business find energy-saving opportunities throughout your facility. Request a FREE facility assessment.

[Overview](#)

[Assessment Types](#)

[View All](#)



Incentives

Take advantage of ComEd's Energy Efficiency Program incentives that can help you reduce your energy consumption.

[Lighting](#)

[Business Instant Lighting Discounts](#)

[View All](#)



Optimization

Operate your building more efficiently, lowering energy costs while enhancing occupant comfort and increasing productivity.

[Retro-Commissioning](#)

[Rooftop Units](#)

[View All](#)

## Outreach Support Contact:

**Hanh Pham**

Project Manager

773-842-7902

[hanhp@twig.com](mailto:hanhp@twig.com)